



ELEVATOR & ESCALATOR PARTS

ARCO







## INTRODUCTION

Our company «ARCO» was founded in 1991 and is currently one of the leading supplier in elevator & escalator spare parts at Saudi Arabia. All our products presents innovating technical features and good quality / price relationship. Most of our products are exported to several countries worldwide. We have branch offices and distributors in Jordan, Egypt & Lebanon.

We are sole agent for many European companies, enabling us to supply different makes of lifts and escalators, including hydraulic & food lift. We have wide range of controllers, electrical as well as electronic, which can be delivered fast. We can supply many decorative and attractive stainless steel ceilings for elevator cabins, fabricated according to the customer specification. We also stock many kinds of attractive steel lamination for the elevator doors. We have very strong elevator machines with gear box from 8 hp to maximum.

**ARCO**

12  
11  
10  
9  
8  
7  
6  
5  
4  
3  
2  
1

WELCOME TO **ARCO**



FACTORY



# ARCO **FACTORY**



FACTORY



# ARCO **FACTORY**





FACTORY



# ARCO **FACTORY**



FACTORY



# ARCO **OFFICE**



**TRACTION**



**MACHINE**



**ARCO**





TRACTION MACHINE



## COMPONENTS



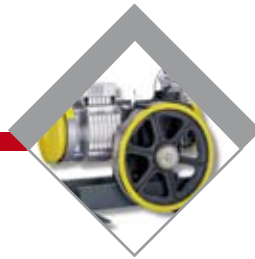
TRACTION MACHINE



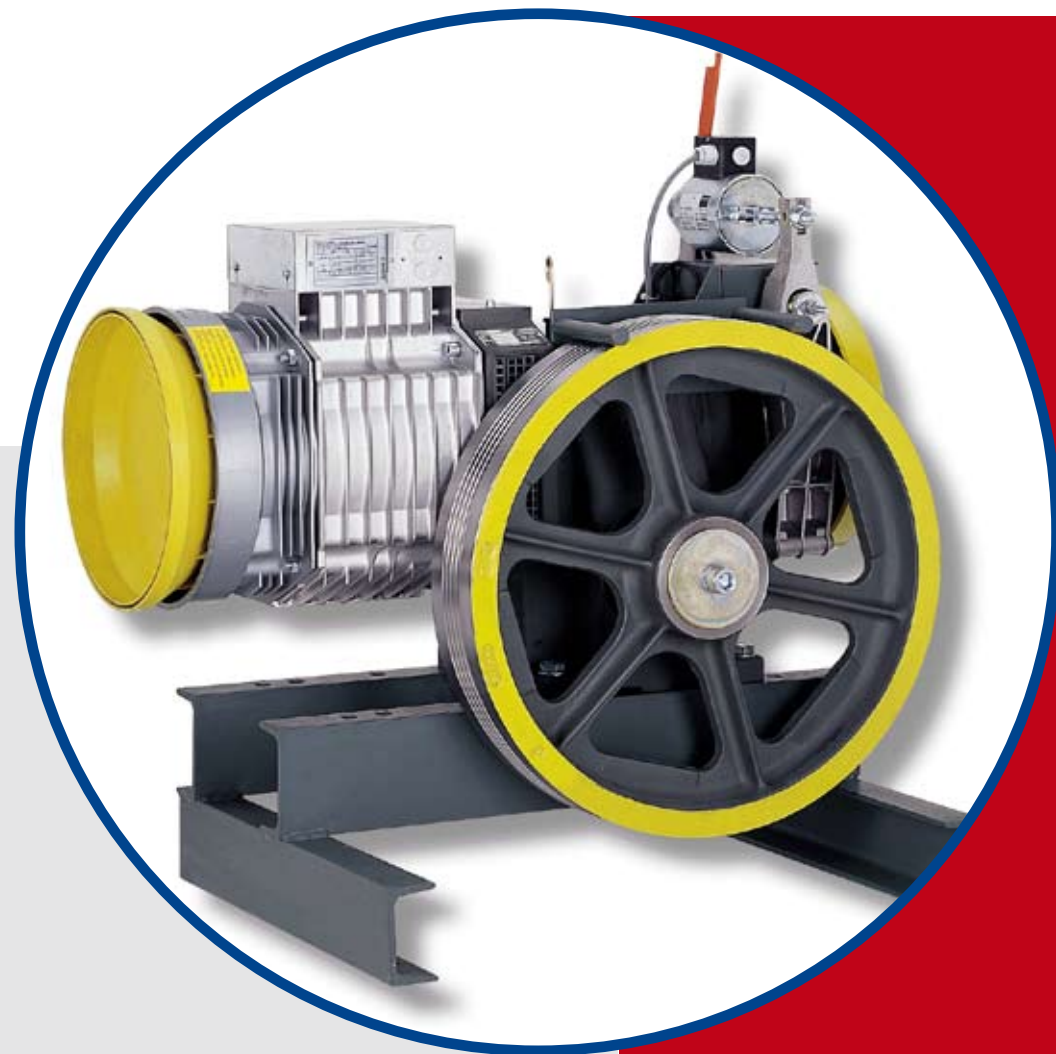
## TRACTION **MACHINE**



TRACTION MACHINE



# TRACTION **MACHINE**



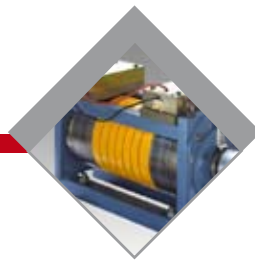
TRACTION MACHINE



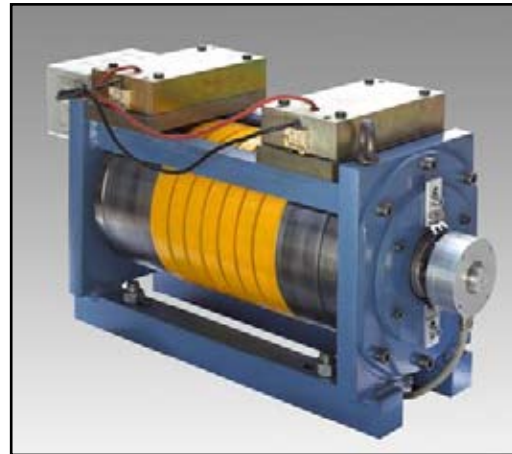
# TRACTION **MACHINE**



TRACTION MACHINE



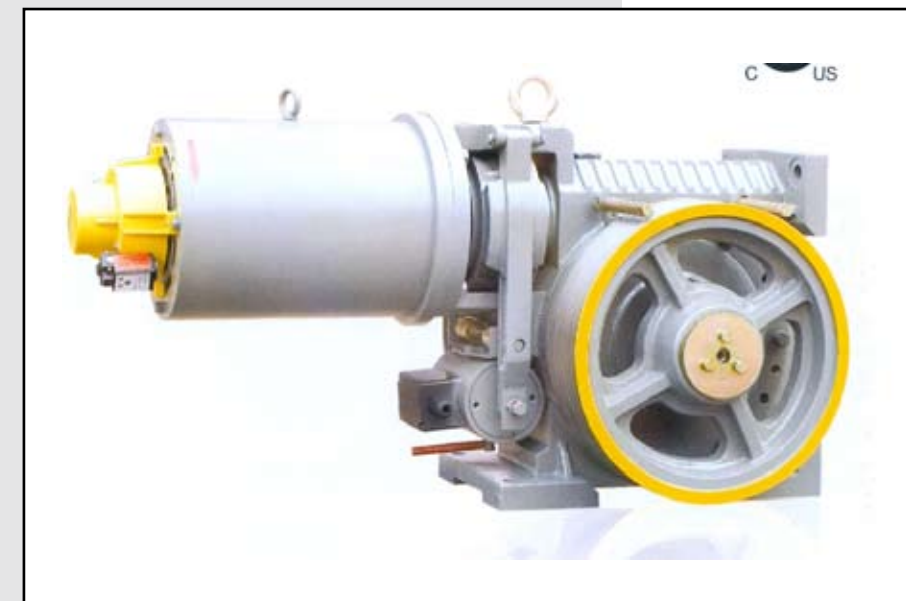
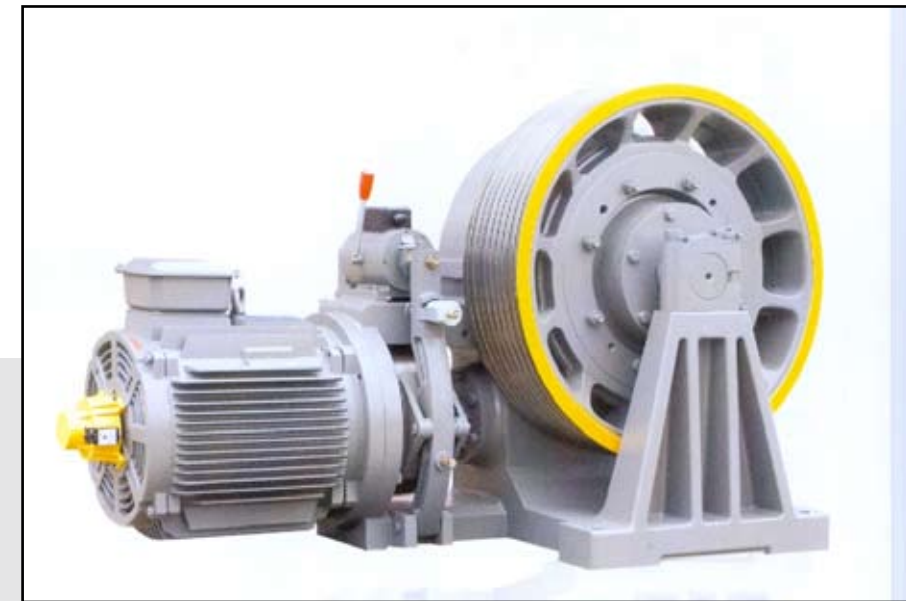
# TRACTION MACHINE



TRACTION MACHINE

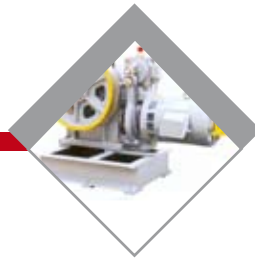


# TRACTION MACHINE





TRACTION MACHINE



# TRACTION **MACHINE**



TRACTION MACHINE



# TRACTION **MACHINE**





**CABIN &**



**ACCESSORIES**



**ARCO**

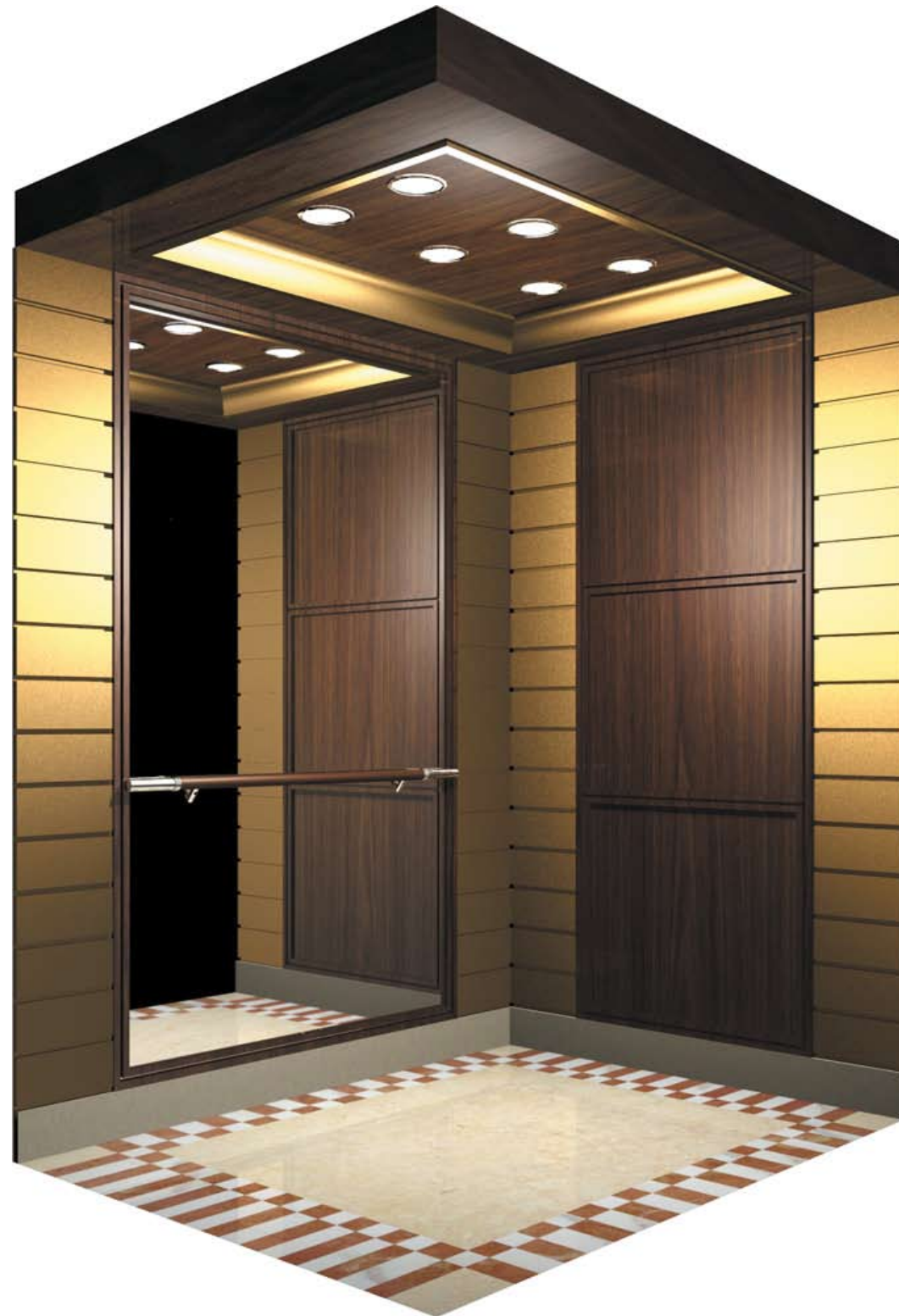




CABIN



CABIN



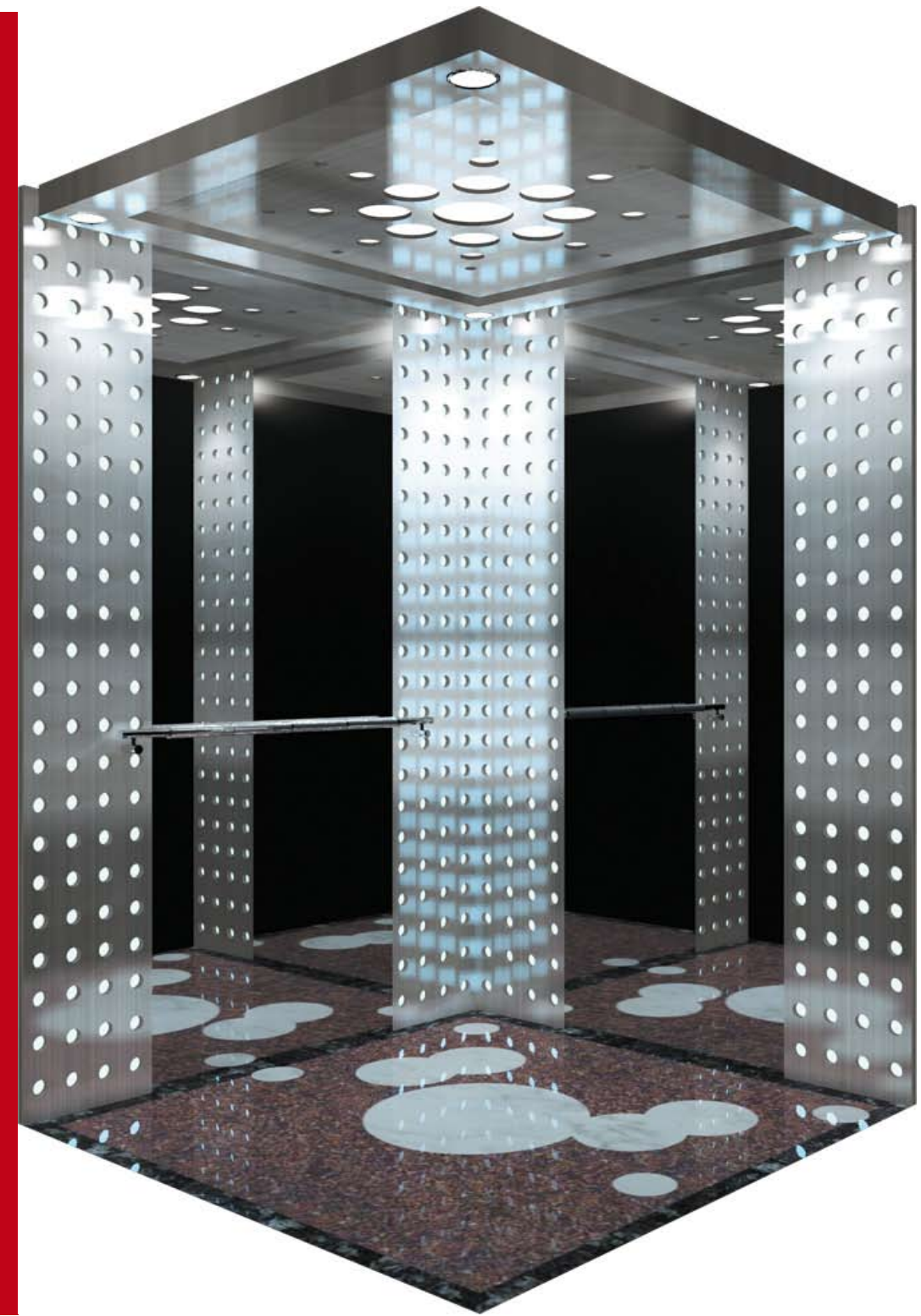
Model No. 2

Model No. 3

CABIN



CABIN





CABIN

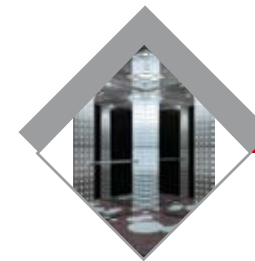


CABIN

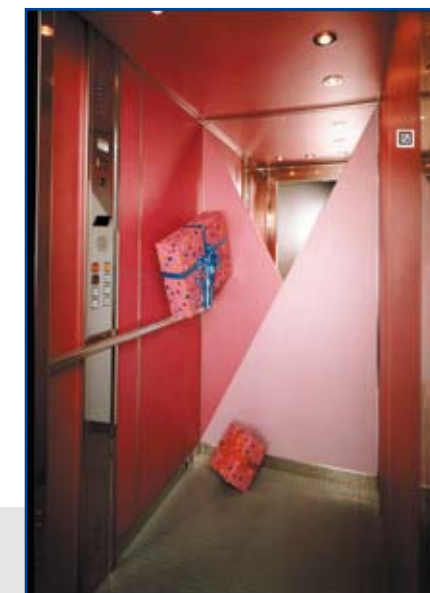


Model No. 4

CABIN



CABIN





CABIN



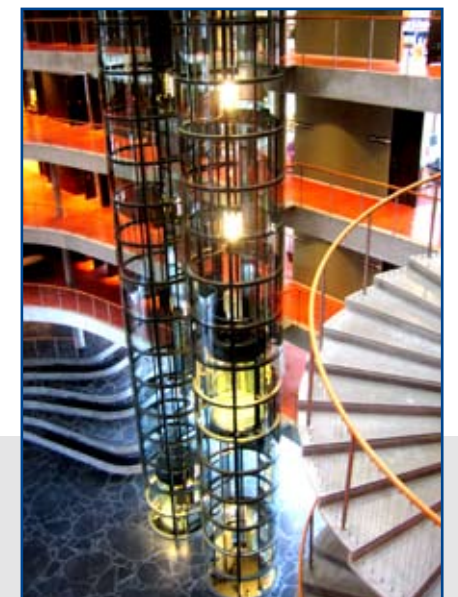
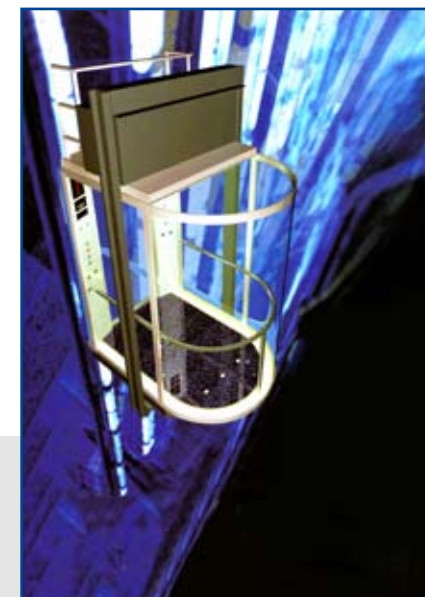
## PANORAMIC CAR



CABIN



## PANORAMIC CAR





CABIN



## NEW CARs



CABIN



## NEW CARs

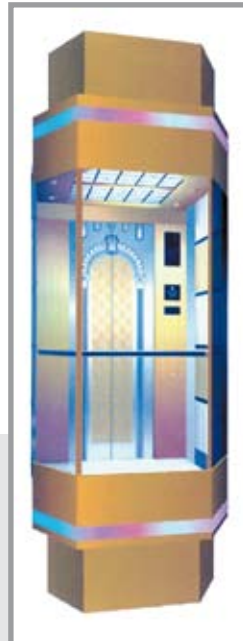




CABIN



## NEW CARs



CABIN



## CEILING



**HSET-J029**

Hairline finished St/St frame  
Acrylic lighting cover, Vaulted ceiling board (Sky and cloud)



**HSET-J030**

Baked Enamel Finished Steel frame  
Acrylic lighting cover



**HSET-J031**

Mirror finished St/St frame  
Acrylic lighting cover, Tube Lamp



**HSET04-032**

Wood of Zelkova  
Acrylic lighting cover, Tube Lamp



**HSET-J033**

Hairline finished St/St frame, Acrylic lighting cover



**HSET-J034**

Mirror finished St/St frame  
Acrylic lighting cover, Tube Lamp



**HSET-J035**

Mirror finished St/St frame  
Vaulted Acrylic lighting cover, Tube Lamp

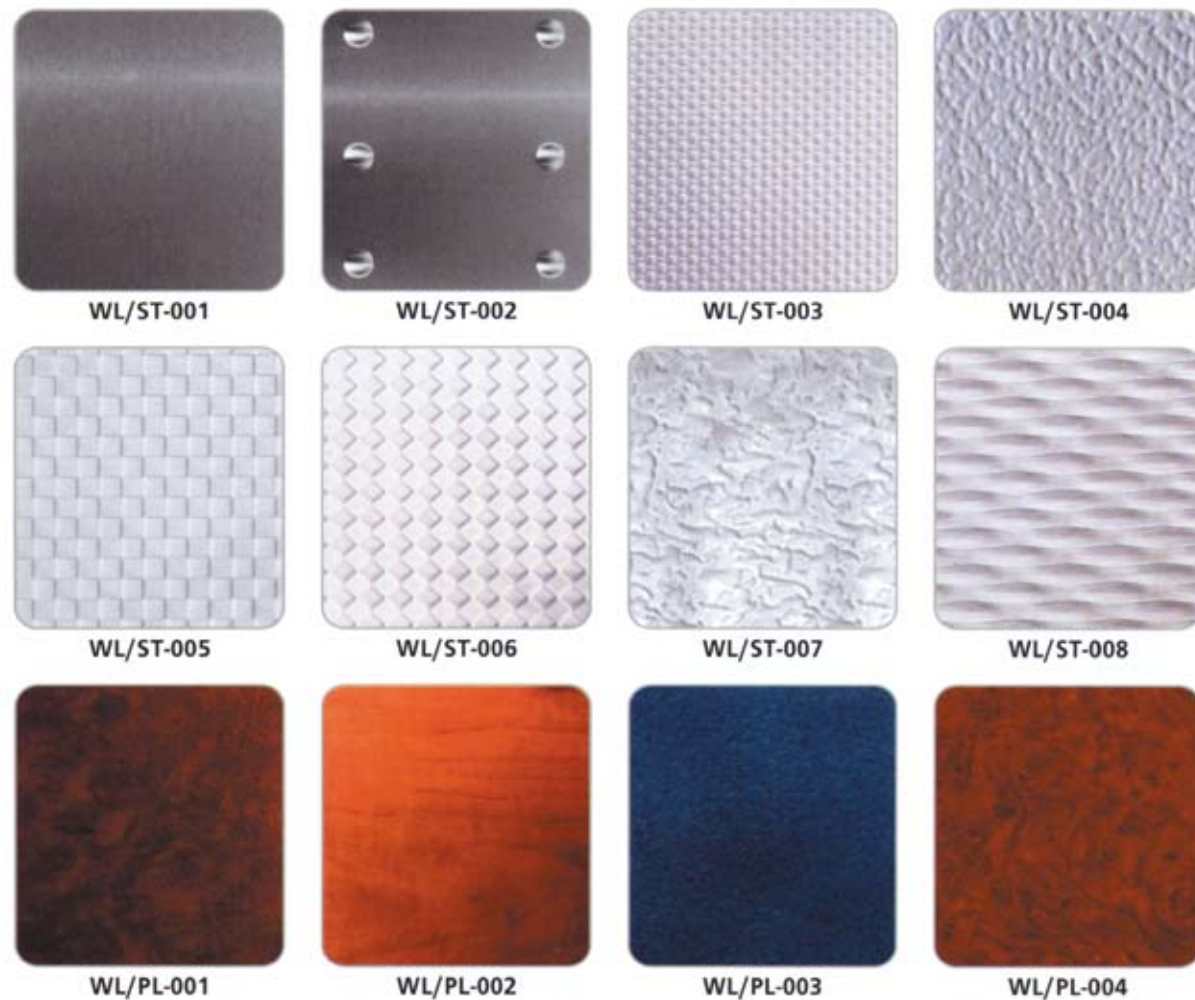


**HSET-J036**

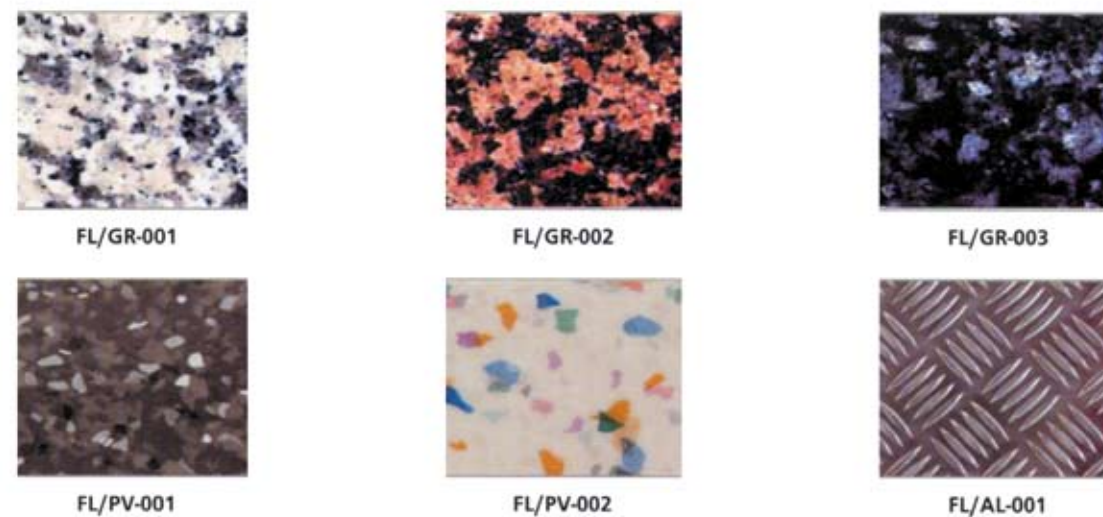
Mirror finished St/St frame  
Acrylic lighting cover



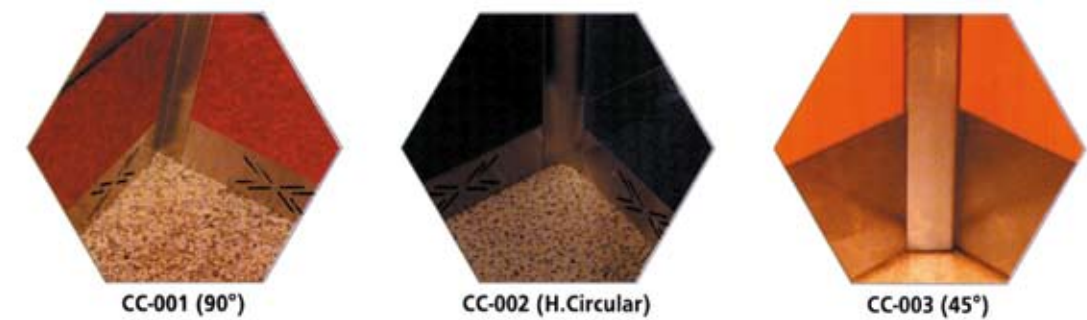
## WALL Finishing



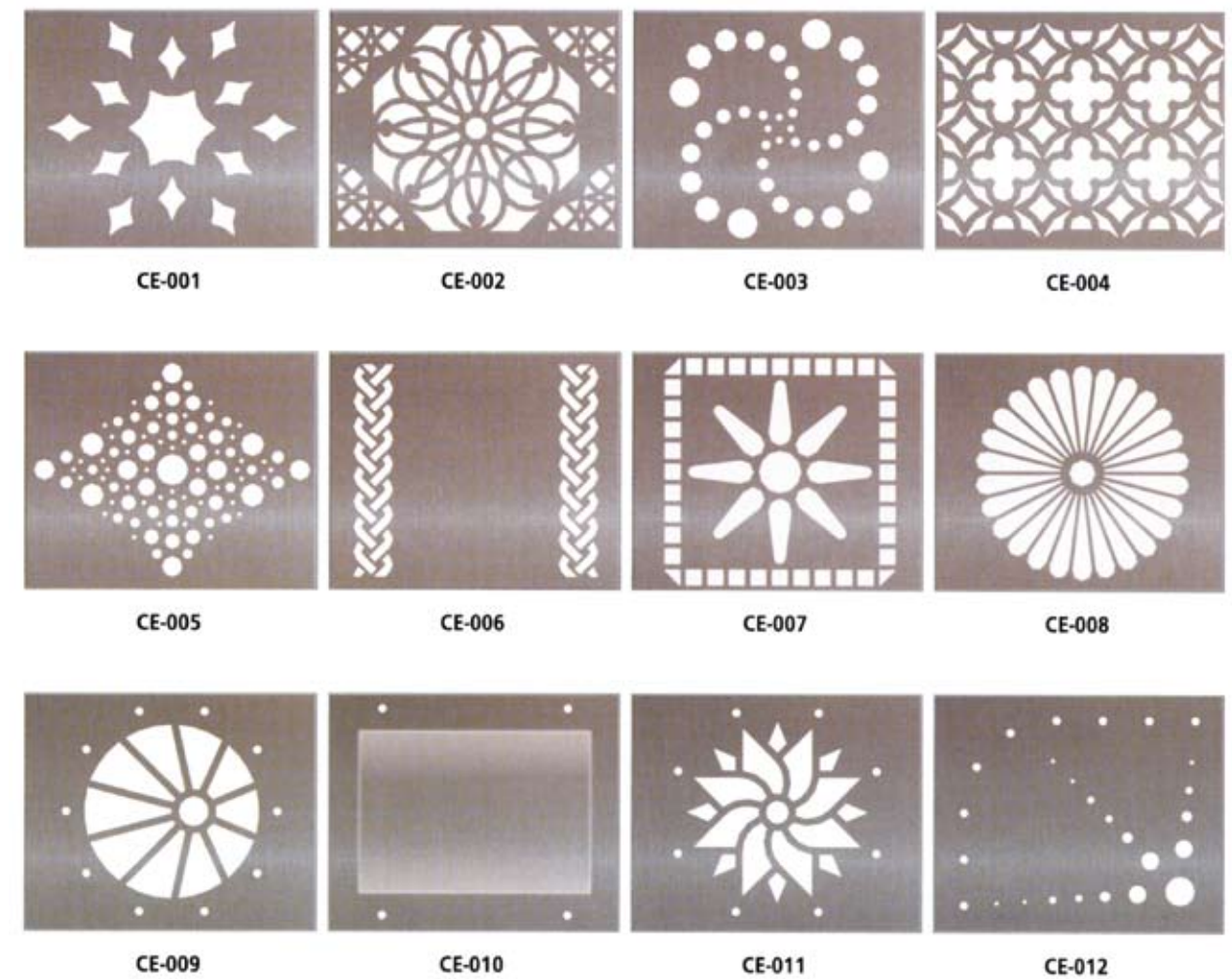
## FLOOR Finishing



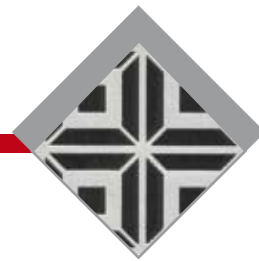
## CABIN CORNERS



## CABIN CEILING MODELS







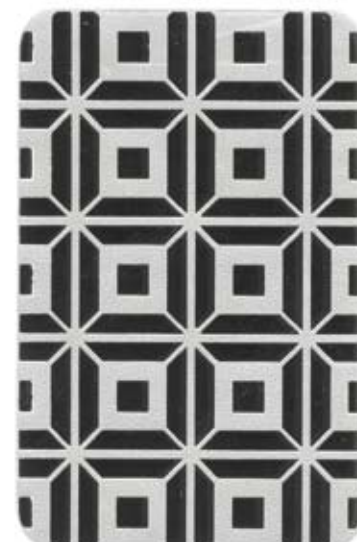
## DECORATIVE STAINLESS STEEL- SILVER



ST/SM-000



ST/SE-020



ST/SE-041



ST/SE-082



ST/SE-037



ST/SE-053



ST/SE-210



ST/SE-066



## DECORATIVE STAINLESS STEEL- GOLD



ST/GM-000



ST/GE-020



ST/GE-053



ST/GE-210



ST/GH-000



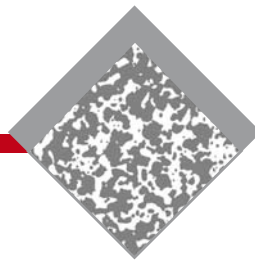
ST/GE-082



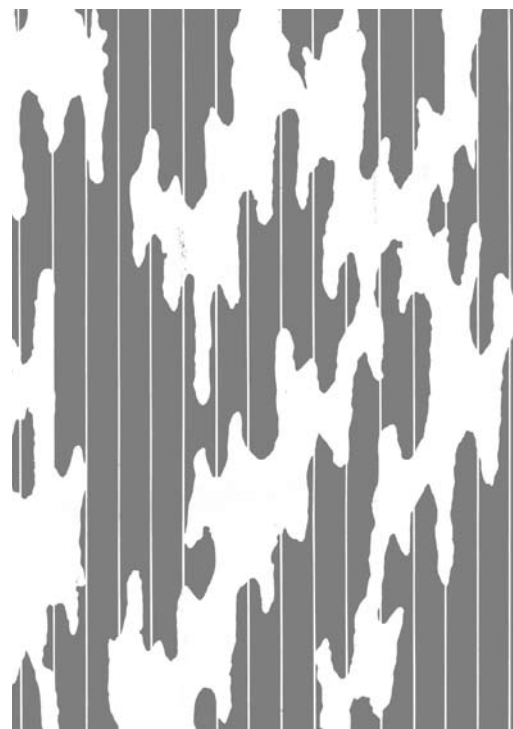
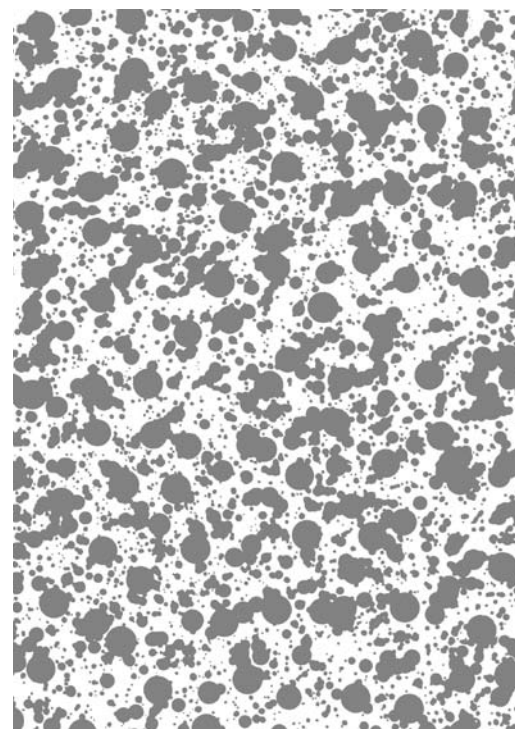
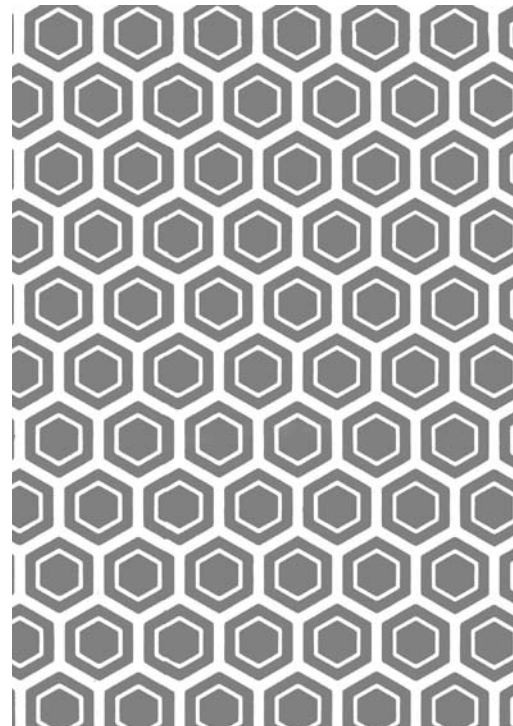
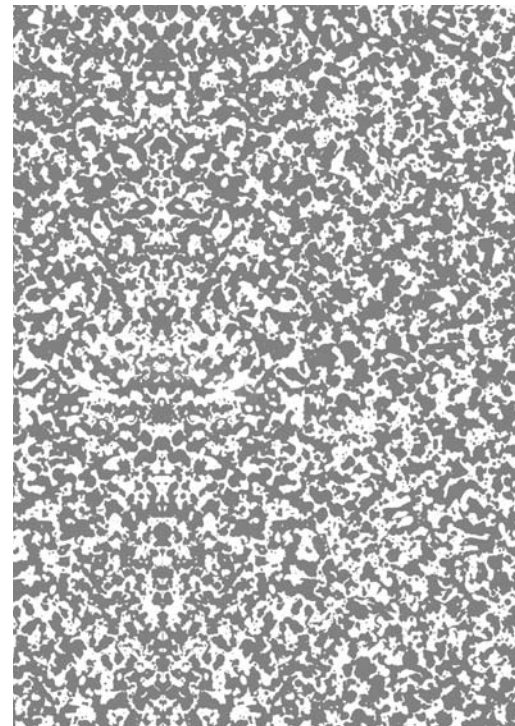
ST/GE-037



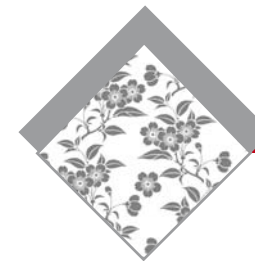
CABIN



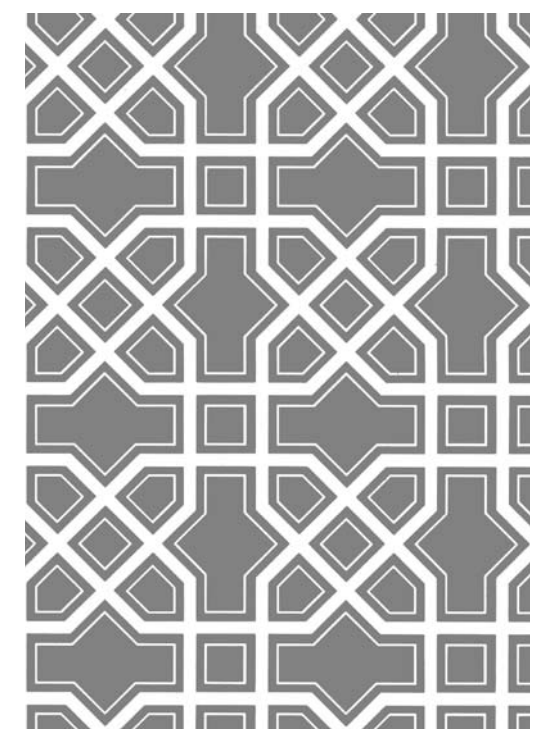
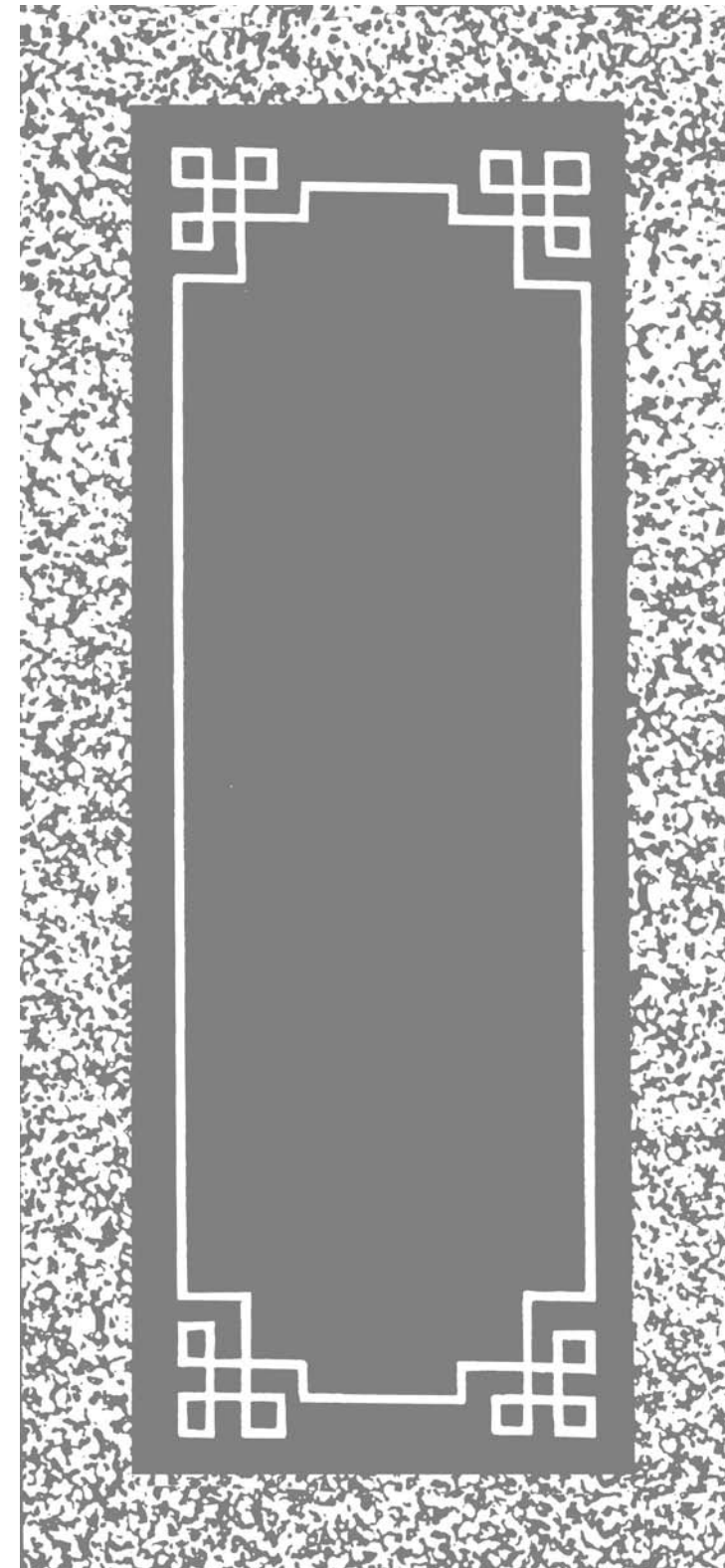
## DECORATIVE STAINLESS STEEL- SILVER



CABIN



## DECORATIVE STAINLESS STEEL- GOLD





## AUTOMATIC DOORS



SWING, FOLDING



ARCO

ARCO



## AUTOMATIC **DOORS**

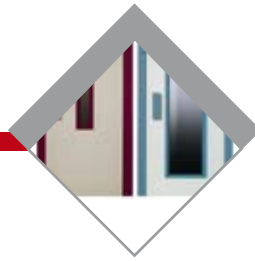


## AUTOMATIC **DOORS**

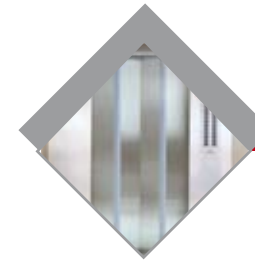




AUTOMATIC **DOORS**AUTOMATIC **DOORS**



## SWING **DOORS**



## FOLDING **DOORS**







## FINISHING **DOORS**



## SWING **DOORS**





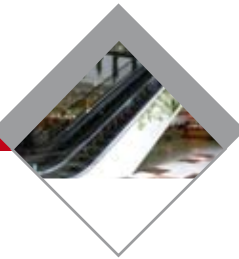
**ESCALATOR**



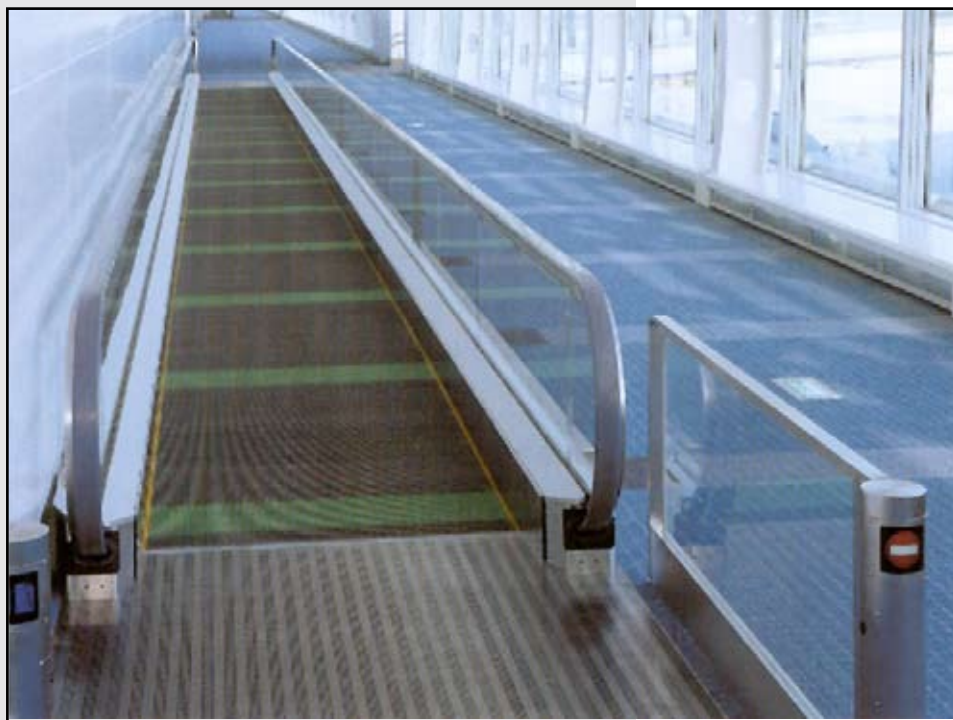
**ARCO** 



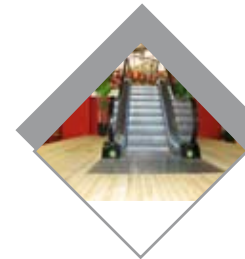
ESCALATOR



# ESCALATOR



ESCALATOR



# ESCALATOR







**HOME LIFT**

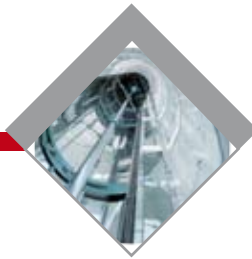


**ARCO**



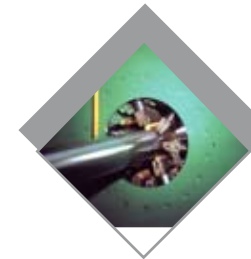


HOME LIFT

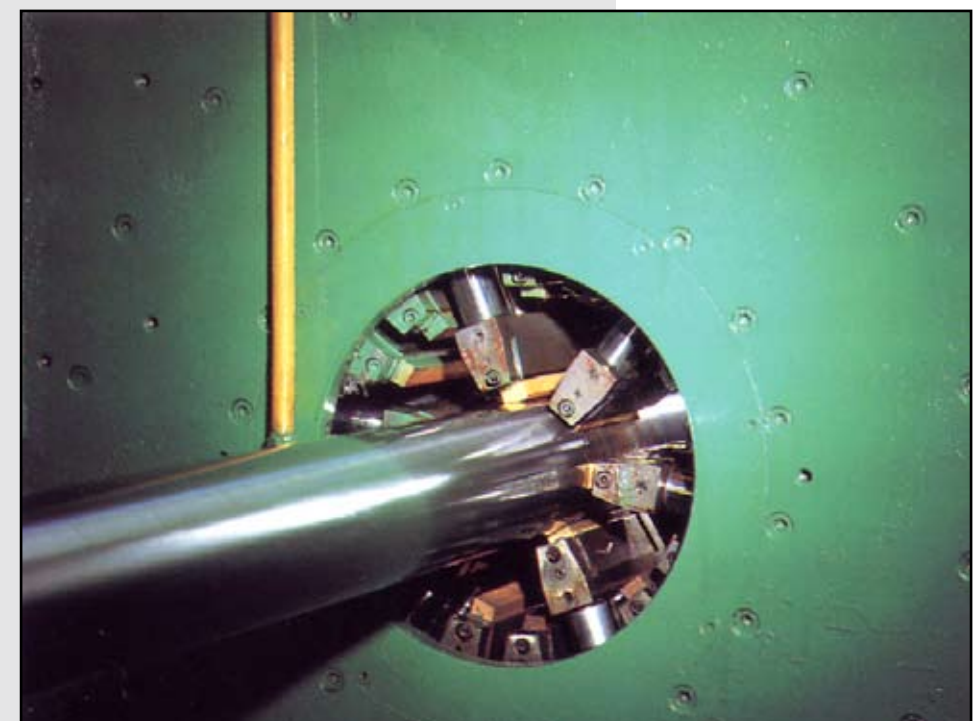
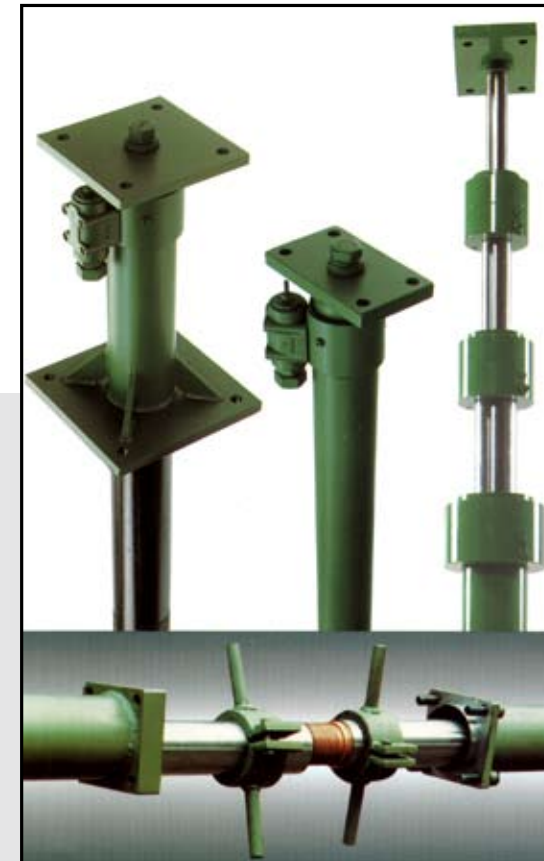


# HOME **LIFT**

HOME LIFT



# HOME **LIFT**





HOME LIFT



# HOME LIFT



HOME LIFT



# HOME LIFT





**ELEVATOR**



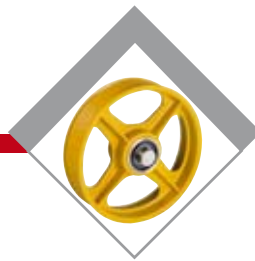
**COMPONENTS**



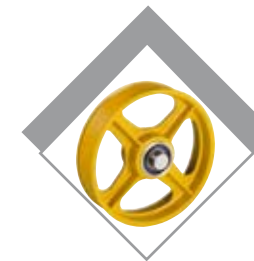
**ARCO**







# ELEVATOR COMPONENTS



# ELEVATOR COMPONENTS



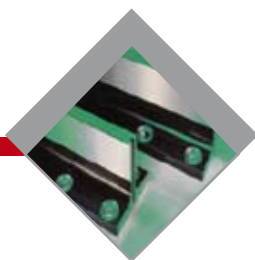
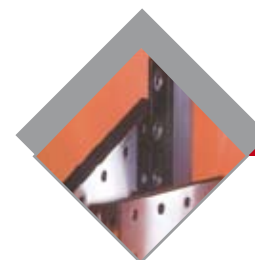
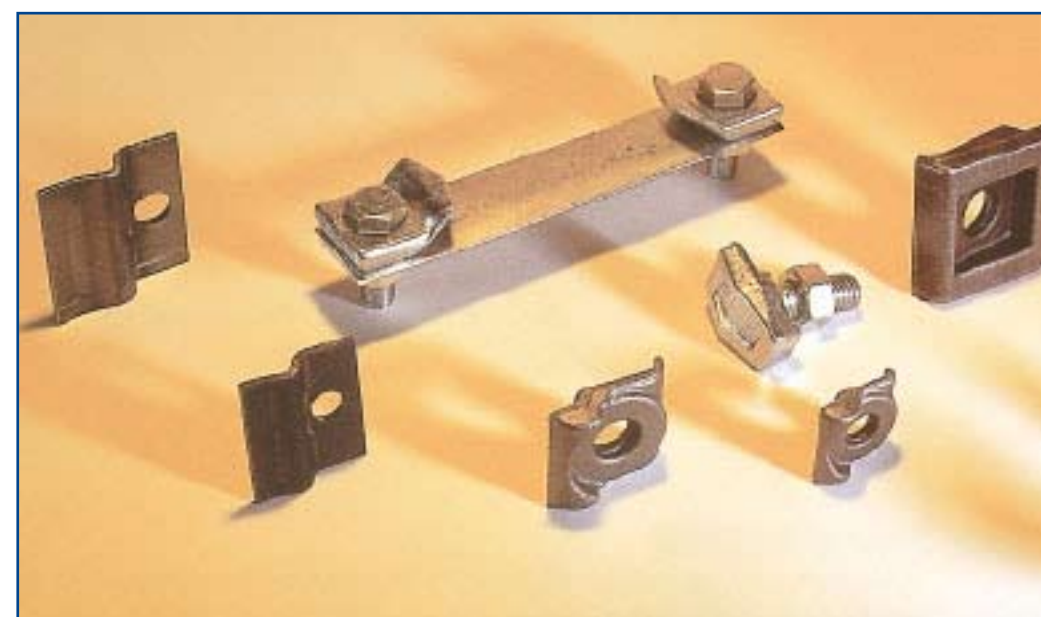
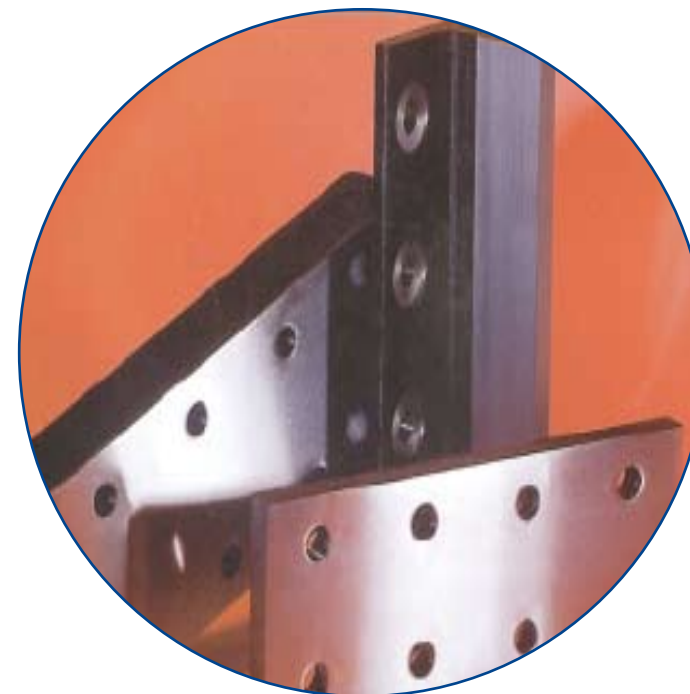




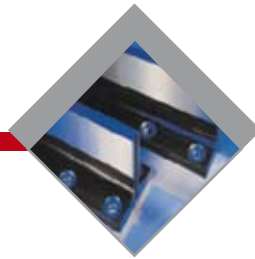
**GUIDE RAIL**





GUIDE **RAIL**GUIDE **RAIL**

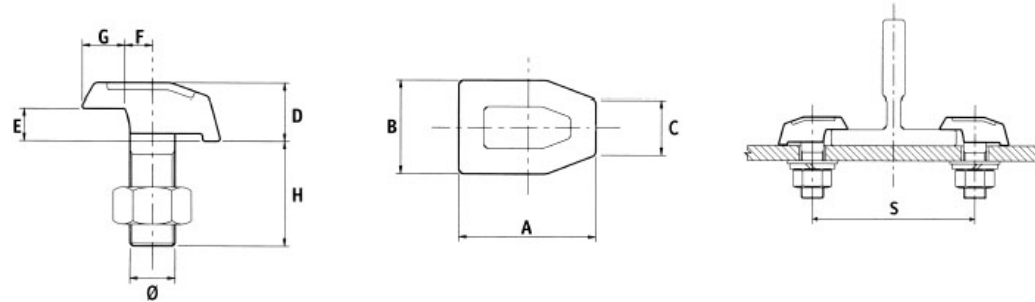
# GUIDE RAIL



## T-Clips

Hot forged rigid guide rail clamping system. Recommended for application where guide rail stack movement is not expected. These clips come complete with threaded shank and nut. T-Clips are available both in burnished and zinc-coated finishing.

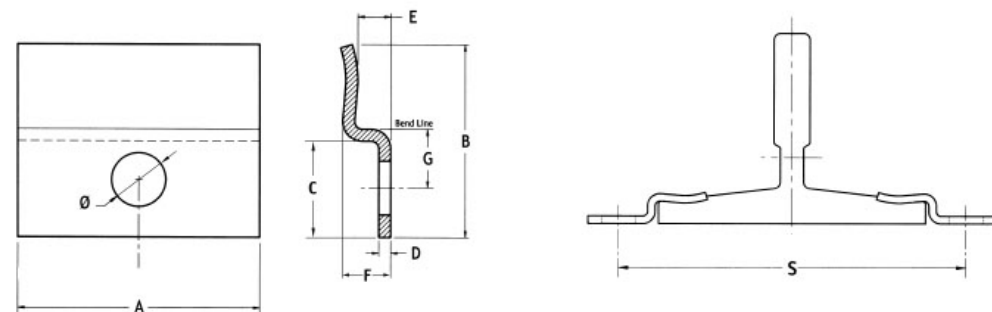
| Monteferro Code | Applicable Guide Rail Size | Ø mm | A mm | B mm | C mm | D mm | E mm | F mm | G mm | H mm | S mm |
|-----------------|----------------------------|------|------|------|------|------|------|------|------|------|------|
| Tolerances      |                            |      |      |      |      |      |      |      |      |      |      |
| T1              | RT40                       | M10  | 32   | 22   | 15   | 12   | 5,5  | 5    | 11   | 23   | 50   |
|                 | RT45                       |      |      |      |      |      |      |      |      |      | 55   |
|                 | RT50 - RF50                |      |      |      |      |      |      |      |      |      | 60   |
|                 | RF65                       |      |      |      |      |      |      |      |      |      | 75   |
| T2              | RT70 - RF70 - RF70.9       | M12  | 39   | 26   | 16   | 15   | 7,3  | 6,5  | 13   | 27   | 83   |
|                 | RF75 - RP75                |      |      |      |      |      |      |      |      |      | 88   |
|                 | RF82 - RP82                |      |      |      |      |      |      |      |      |      | 95   |
|                 | RT80                       |      |      |      |      |      |      |      |      |      | 96   |
| T3              | RP78                       | M14  | 45   | 29   | 16   | 18,5 | 9,5  | 8    | 13   | 34   | 94   |
|                 | RF89 - RP89                |      |      |      |      |      |      |      |      |      | 105  |
|                 | RF90 - RP90                |      |      |      |      |      |      |      |      |      | 106  |
|                 | RP114                      |      |      |      |      |      |      |      |      |      | 131  |
| T4              | RP125                      | M16  | 50   | 34   | 16   | 20,5 | 10,5 | 8,5  | 15   | 40   | 142  |
|                 | RP127-1/2 - RP127-2 c14    |      |      |      |      |      |      |      |      |      | 144  |
| T5              | RP140-1 - RP140-2          | M18  | 55   | 37   | 18   | 23   | 13   | 11   | 17   | 42   | 162  |



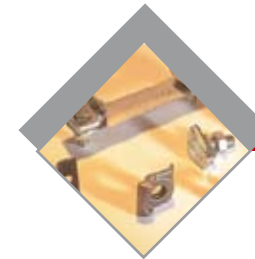
## Sliding Clips

Pressed steel sliding guide rail clamping system. Recommended for application where guide rail stack movement is required due to thermal expansion or building settlement.

| Monteferro Code | Applicable Guide Rail Size | Ø mm | A mm | B mm | C mm | D mm | E mm | F mm | G mm | S mm | Bolt size |
|-----------------|----------------------------|------|------|------|------|------|------|------|------|------|-----------|
| Tolerances      |                            |      |      |      |      |      |      |      |      |      |           |
| SL - P10        | RF89 - RP89                | 15   | 76   | 70   | 31   | 5    | 9    | 14,5 | 18,5 | 128  | M12x35    |
|                 | RF90 - RP90                |      |      |      |      |      |      |      |      | 128  |           |
|                 | RP114                      |      |      |      |      |      |      |      |      | 152  |           |
|                 | RP125                      |      |      |      |      |      |      |      |      | 162  |           |
|                 | RP127-1                    |      |      |      |      |      |      |      |      | 166  |           |
| SL - P20        | RP127-2 / RP127-2 c14      | 17,5 | 76   | 70   | 33   | 5    | 14,5 | 20,5 | 19   | 166  | M16x50    |
|                 | RP140-1                    |      |      |      |      |      |      |      |      | 178  |           |



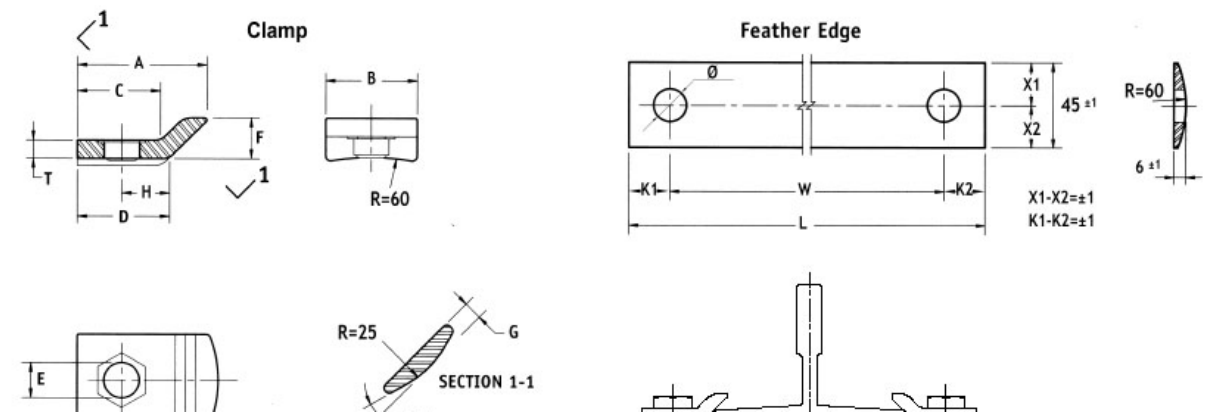
# GUIDE RAIL



## Sliding Clamps

Hot forged sliding guide rail clamping system. Engineered to provide a point bearing contact used in conjunction with the Feather Edge radius guide rail seat. This clamp system provides the strength of a forged clip with the flexibility of the sliding clip.

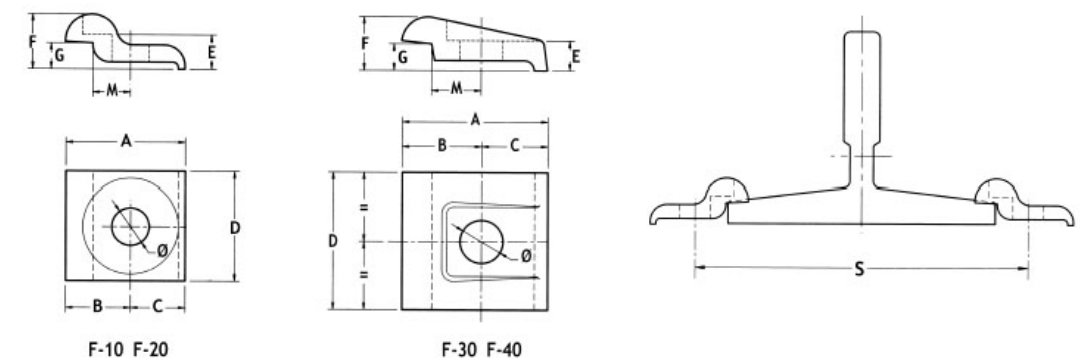
| Monteferro Code | Applicable Guide Rail Size      | A mm | B mm | C mm | D mm | E mm | F mm | G mm | H mm | T mm | L mm | W mm | Ø mm | Bolt size |
|-----------------|---------------------------------|------|------|------|------|------|------|------|------|------|------|------|------|-----------|
| Tolerances      |                                 |      |      |      |      |      |      |      |      |      |      |      |      |           |
| SL-F 10         | RT50 - RF50                     | 44   | 40   | 29   | 33   | 14   | 20   | 8    | 18   | 7    | 129  | 95   | 17   | M12x45    |
| SL-F 20         | RT70 - RF70 - RF70.9            | 44   | 40   | 29   | 33   | 14   | 20   | 8    | 18   | 7    | 151  | 117  | 17   | M12x45    |
| SL-F 30         | RF75 - RP75 - RP78              | 44   | 40   | 29   | 33   | 14   | 20   | 8    | 18   | 7    | 156  | 122  | 17   | M12x45    |
| SL-F 40         | RF89 - RP89 - RF90 - RP90       | 44   | 40   | 29   | 33   | 14   | 20   | 8    | 18   | 7    | 172  | 138  | 17   | M12x45    |
| SL-F 50         | RP125 - RP127-1/2 - RP127-2 c14 | 55   | 45   | 35   | 38   | 18   | 25   | 9    | 18   | 10   | 227  | 183  | 21   | M16x50    |
| SL-F 60         | RP140-1                         | 55   | 45   | 35   | 38   | 18   | 25   | 9    | 18   | 10   | 242  | 198  | 21   | M16x50    |
| SL-F 70         | RP140-2                         | 55   | 45   | 35   | 38   | 18   | 25   | 9    | 18   | 10   | 250  | 206  | 21   | M16x50    |



## Forged Clips

Hot forged rigid guide rail clamping system. Recommended for application where guide rail stack movement is not expected.

| Monteferro Code | Applicable Guide Rail Size | A mm | B mm | C mm | D mm | E mm | F mm | G mm | M mm | Ø mm | S mm | Bolt size |
|-----------------|----------------------------|------|------|------|------|------|------|------|------|------|------|-----------|
| Tolerances      |                            |      |      |      |      |      |      |      |      |      |      |           |
| F 10            | RF89 - RP89 - RF90 - RP90  | 41   | 22   | 19   | 41   | 10   | 18   | 8    | 12,5 | 14,5 | 115  | M12       |
|                 | RP114                      |      |      |      |      |      |      |      |      |      | 150  |           |
| F 20            | RP125                      | 55,5 | 30   | 25,5 | 51   | 16   | 25,5 | 12,5 | 17,5 | 17,5 | 162  | M16       |
|                 | RP127-1/2 - RP127-2 c14    |      |      |      |      |      |      |      |      |      | 164  |           |
| F 30            | RP140-1                    | 70   | 38   | 32   | 65   | 16   | 25,5 | 12,5 | 24   | 20,5 | 188  | M18       |
| F 40            | RP140-2                    | 70   | 38   | 32   | 76   | 19   | 28,5 | 19   | 24   | 20,5 | 188  | M18       |





## PUSH BUTTONS



ARCO





# PUSH **BUTTONS**



# PUSH **BUTTONS**







## PUSH BUTTONS



### Feature

- Twin-arc symmetrical surface, chrome-faced outer frame, stainless chicklet;
- The thickness of installation plate: 2~3 mm;
- Using special fittings, easy for installation and maintenance.

### Optional illumination color & character



### Optional chicklet



### Effect & Fixing

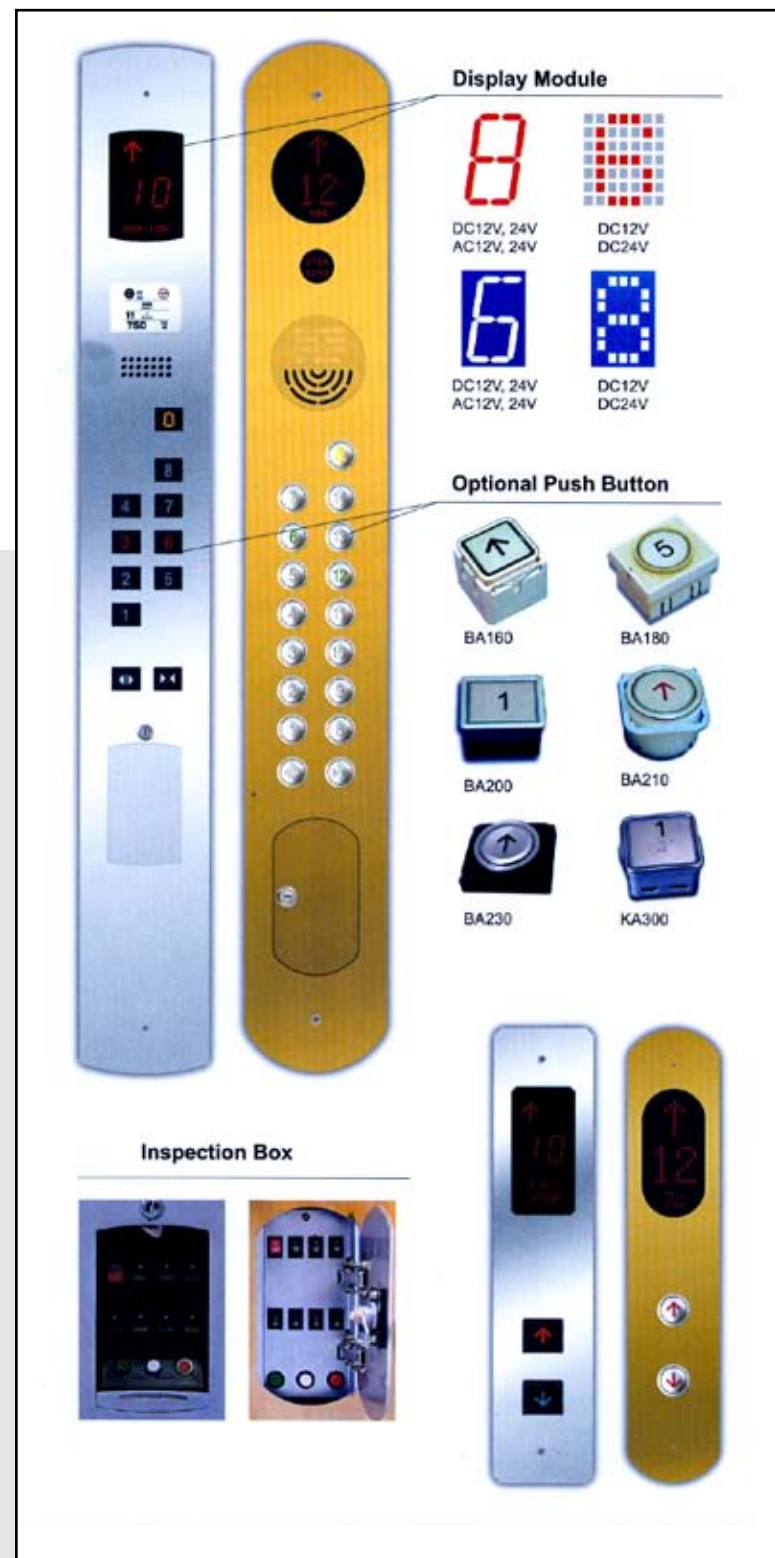


## PUSH BUTTONS





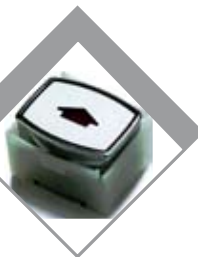
# PUSH **BUTTONS**



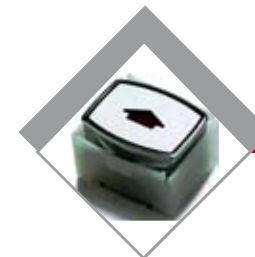
# PUSH **BUTTONS**







# PUSH **BUTTONS**



# PUSH **BUTTONS**



## DOOR LOCK



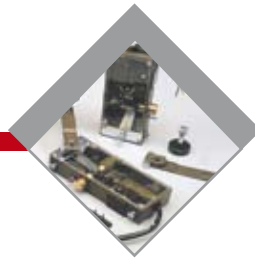
## DOOR CLOSER



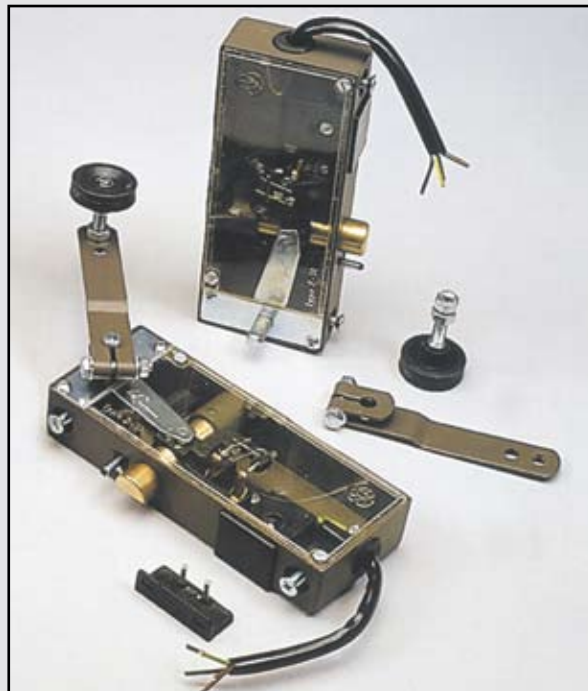
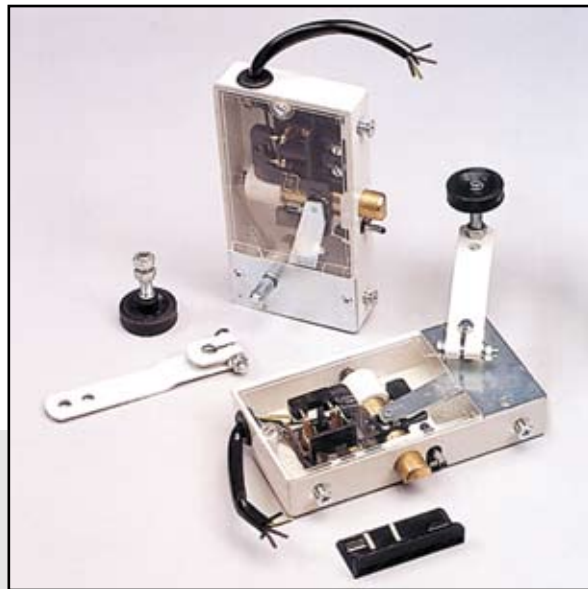
ARCO







# DOOR LOCK, CLOSER



# DOOR LOCK, CLOSER



**SAFETY**



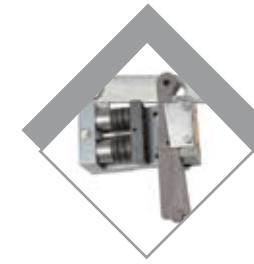
**LIMIT**



**ARCO**

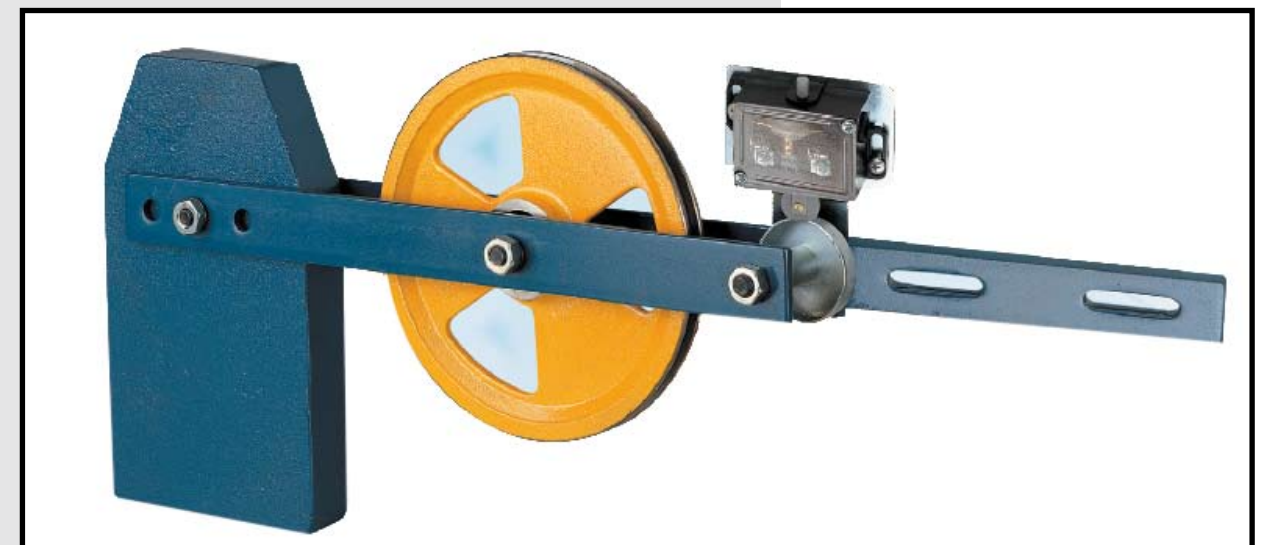
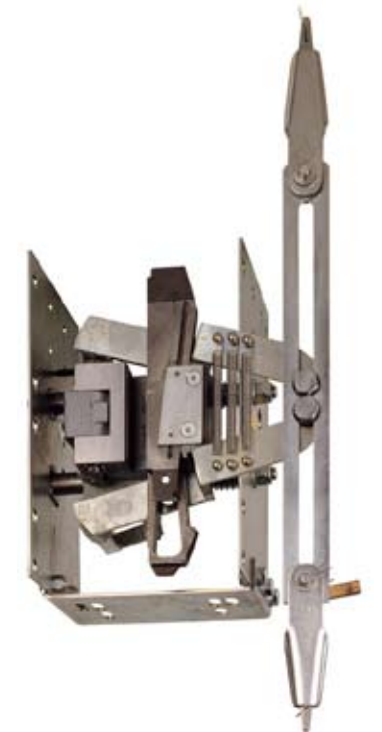
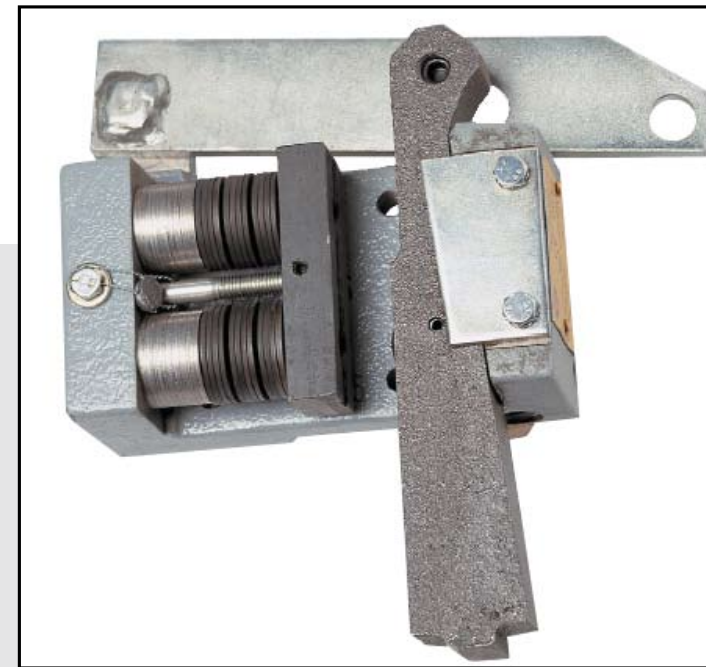






**SAFETY**

## **SAFETY** COMPONENTS





**ELEVATOR**



**CONTROLLER**



**ARCO**





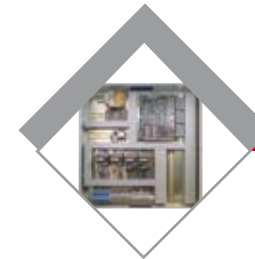
CONTROLLER



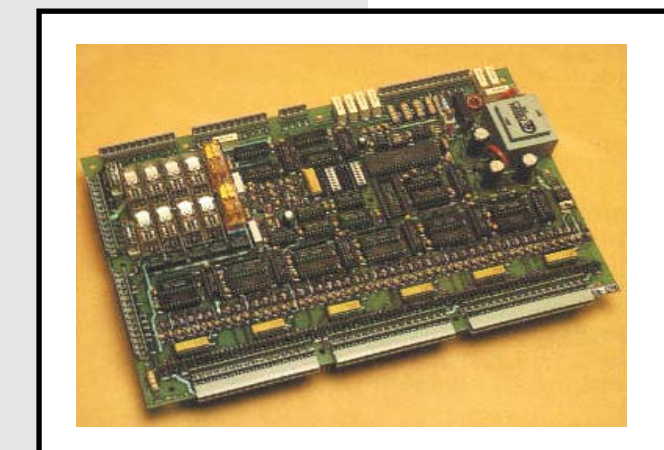
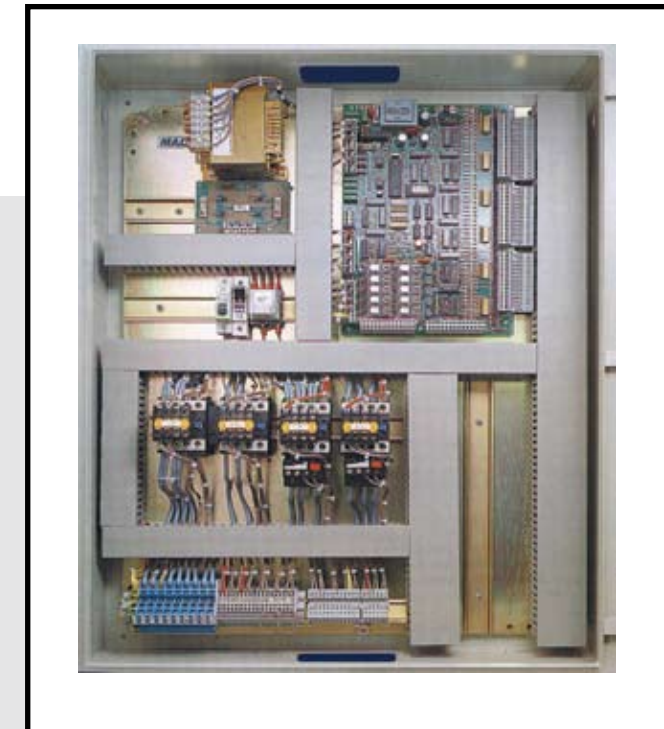
# ELEVATOR CONTROL UNITS



CONTROLLER



# MICRO PROCESSOR CONTROLLER



CONTROLLER



## VVVF CONTROL UNIT



CONTROLLER



## RELAY UNITS

